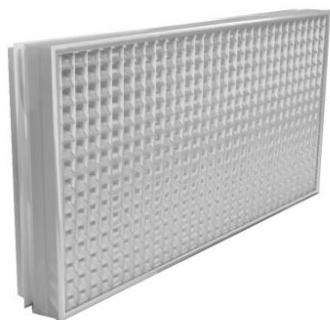


# EGQIF Inclined square mesh grilles without frame



## Description

Aluminium exhaust grilles with inclined square mesh grilles, pitch 13x13 mm.

## Characteristics

Material: aluminium perimeter frame.  
Finish: natural anodised  
Installation: fastening with brackets;

## Use

Its nice design and large effective cross-section make it ideal for civil installations:

- For air exhaust in rooms.
- For flush installation for 12.5 mm thick plasterboard walls.
- For flush installation for masonry walls.
- For extraction and supply on fan coil cabinet.

## Accessories

SC galvanised steel regulation damper with blades with opposing movement.

## On request

Painting in different RAL colours;

## Effective cross-section

| H   | L                                      |       |       |       |       |       |
|-----|--|-------|-------|-------|-------|-------|
|     | 400                                    | 500   | 600   | 800   | 1000  | 1200  |
|     | Effective cross-section m <sup>2</sup> |       |       |       |       |       |
| 75  | 0,022                                  | 0,029 | 0,035 | 0,046 | 0,059 | 0,070 |
| 100 | 0,032                                  | 0,041 | 0,050 | 0,066 | 0,084 | 0,100 |
| 125 | 0,046                                  | 0,059 | 0,071 | 0,095 | 0,120 | 0,144 |
| 150 | 0,051                                  | 0,065 | 0,077 | 0,101 | 0,132 | 0,158 |
| 200 | 0,070                                  | 0,088 | 0,108 | 0,143 | 0,181 | 0,217 |
| 300 | 0,107                                  | 0,137 | 0,166 | 0,221 | 0,271 | 0,334 |
| 400 | 0,139                                  | 0,179 | 0,217 | 0,288 | 0,365 | 0,436 |

## Operating data

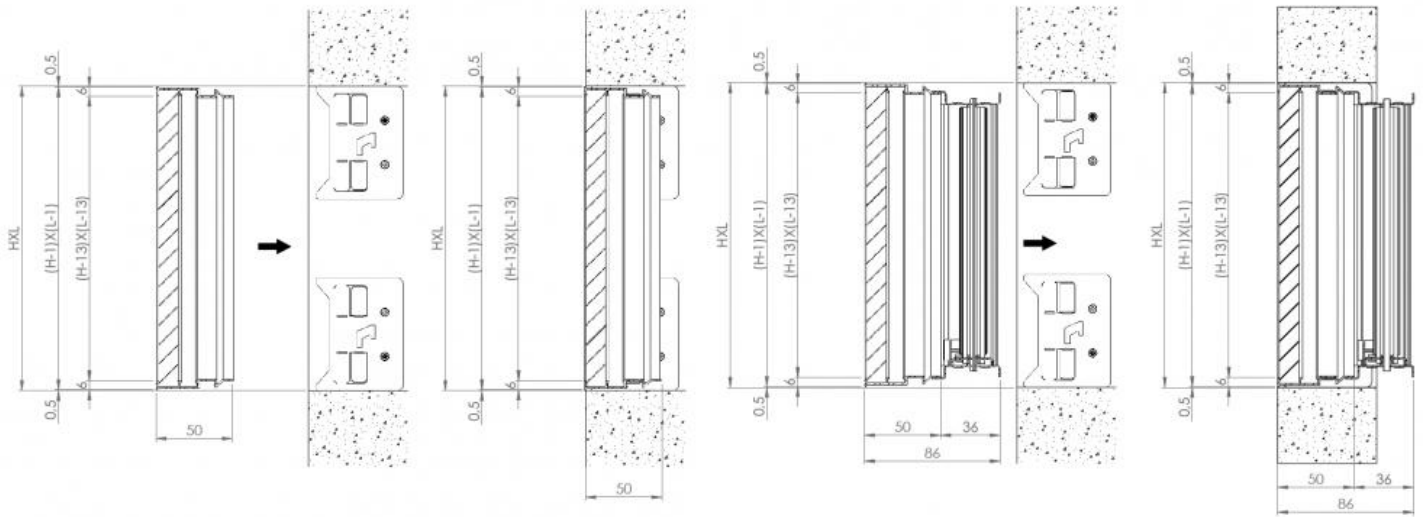
Vk: effective speed (m/s)  
m<sup>3</sup>/h: flow rate  
Pa: pressure drops in Pascal  
dB(A): noise level

L: base  
H: height  
All dimensions are expressed in mm.

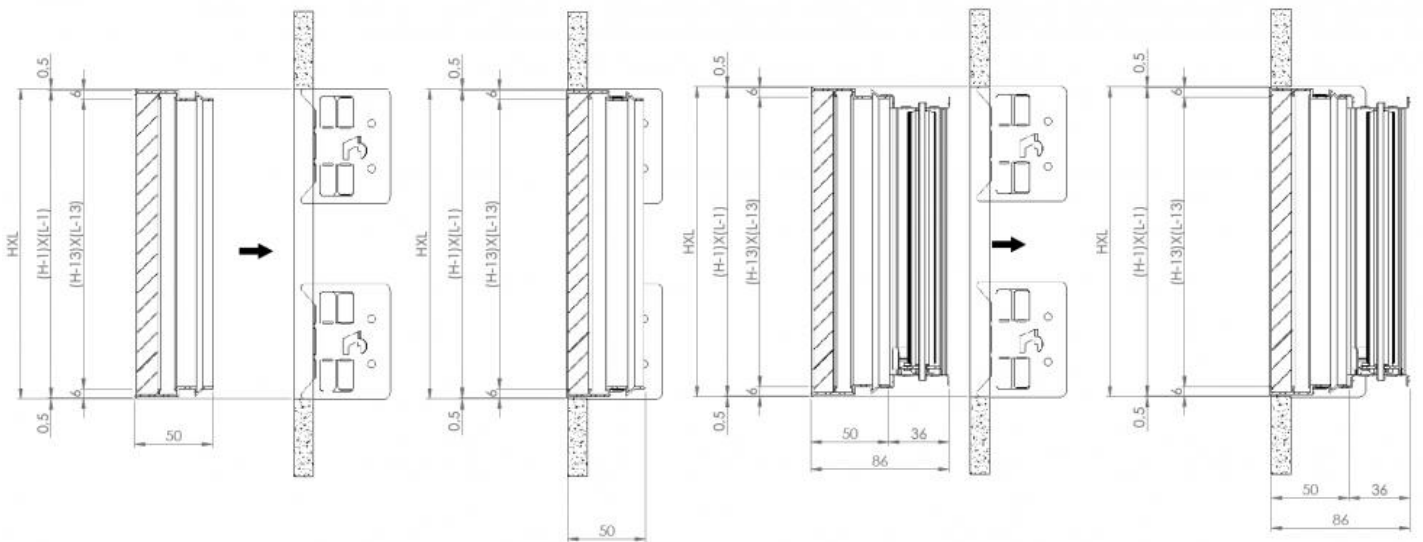
| H   | Vk m/s | L                          |      |      |      |      |      | Pa | dB(A) |
|-----|--------|----------------------------|------|------|------|------|------|----|-------|
|     |        | 400                        | 500  | 600  | 800  | 1000 | 1200 |    |       |
|     |        | air flow m <sup>3</sup> /h |      |      |      |      |      |    |       |
| 75  | 1      | 81                         | 103  | 125  | 167  | 212  | 254  | 2  | <15   |
|     | 3      | 242                        | 309  | 376  | 502  | 635  | 761  | 7  | 28/32 |
|     | 5      | 323                        | 412  | 502  | 669  | 847  | 1014 | 12 | 38/42 |
| 100 | 1      | 120                        | 150  | 180  | 240  | 305  | 360  | 2  | <15   |
|     | 3      | 350                        | 445  | 540  | 715  | 905  | 1080 | 7  | 28/32 |
|     | 5      | 465                        | 590  | 715  | 955  | 1205 | 1440 | 12 | 38/42 |
| 125 | 1      | 167                        | 212  | 257  | 342  | 433  | 518  | 2  | <15   |
|     | 3      | 500                        | 636  | 772  | 1027 | 1299 | 1554 | 7  | 28/32 |
|     | 5      | 666                        | 847  | 1029 | 1369 | 1732 | 2072 | 12 | 38/42 |
| 150 | 1      | 183                        | 233  | 276  | 362  | 477  | 571  | 2  | <15   |
|     | 3      | 550                        | 700  | 827  | 1086 | 1431 | 1712 | 7  | 28/32 |
|     | 5      | 734                        | 934  | 1103 | 1448 | 1908 | 2282 | 12 | 38/42 |
| 200 | 1      | 251                        | 318  | 388  | 516  | 653  | 781  | 2  | <15   |
|     | 3      | 754                        | 953  | 1164 | 1549 | 1959 | 2344 | 7  | 28/32 |
|     | 5      | 1005                       | 1270 | 1552 | 2065 | 2612 | 3125 | 12 | 38/42 |
| 300 | 1      | 387                        | 492  | 597  | 795  | 975  | 1203 | 2  | <15   |
|     | 3      | 1161                       | 1476 | 1792 | 2384 | 2926 | 3608 | 7  | 28/32 |
|     | 5      | 1547                       | 1968 | 2389 | 3179 | 3901 | 4810 | 12 | 38/42 |
| 400 | 1      | 502                        | 643  | 781  | 1038 | 1313 | 1571 | 2  | <15   |
|     | 3      | 1516                       | 1928 | 2342 | 3115 | 3946 | 4714 | 7  | 28/32 |
|     | 5      | 2008                       | 2572 | 3122 | 4153 | 5254 | 6285 | 12 | 38/42 |

## EGQIF dimensions with and without damper on masonry wall

For installation you need the fixing kit consisting of 4 brackets, not supplied with the article.  
N.B. for installation on a masonry wall, the heights 75 mm, 100 mm are not available.



EGQIF dimensions with and without damper on plasterboard wall



### SC regulation damper

Galvanised steel regulation damper with blades with opposing movement.  
 Maximum dimensions L x H for construction in one piece 1000 mm x 600 mm.



### Price list

Item normally available from stock

| dimensions LxH | EGQIF    | SC regulation damper |
|----------------|----------|----------------------|
|                | euro     | euro                 |
| 400x75         | 45,20 ∨  | 17,21 ∨              |
| 500x75         | 51,68 ∨  | 20,54 ∨              |
| 600x75         | 58,21 ∨  | 23,50 ∨              |
| 800x75         | 71,55 ∨  | 29,54 ∨              |
| 1000x75        | 83,21 ∨  | 36,25 ∨              |
| 1200x75        | 98,45 ∨  | a.r. ∨               |
| 400x100        | 45,20 ∨  | 17,21 ∨              |
| 500x100        | 51,68 ∨  | 20,54 ∨              |
| 600x100        | 58,21 ∨  | 23,50 ∨              |
| 800x100        | 71,55 ∨  | 29,54 ∨              |
| 1000x100       | 83,21 ∨  | 36,25 ∨              |
| 1200x100       | 98,45 ∨  | a.r. ∨               |
| 400x125        | 48,97 ∨  | 19,86 ∨              |
| 500x125        | 56,19 ∨  | 23,00 ∨              |
| 600x125        | 63,41 ∨  | 26,21 ∨              |
| 800x125        | 78,17 ∨  | 33,57 ∨              |
| 1000x125       | 96,36 ∨  | 40,46 ∨              |
| 1200x125       | 115,07 ∨ | a.r. ∨               |
| 400x150        | 52,70 ∨  | 19,86 ∨              |
| 500x150        | 60,65 ∨  | 23,00 ∨              |
| 600x150        | 67,97 ∨  | 26,21 ∨              |
| 800x150        | 83,21 ∨  | 33,57 ∨              |
| 1000x150       | 109,50 ∨ | 40,46 ∨              |
| 1200x150       | 131,70 ∨ | a.r. ∨               |
| 400x200        | 67,13 ∨  | 24,57 ∨              |
| 500x200        | 73,47 ∨  | 28,86 ∨              |
| 600x200        | 83,21 ∨  | 33,25 ∨              |
| 800x200        | 102,60 ∨ | 40,75 ∨              |
| 1000x200       | 134,52 ∨ | 45,48 ∨              |
| 1200x200       | 163,63 ∨ | a.r. ∨               |
| 400x300        | 83,21 ∨  | 34,39 ∨              |
| 500x300        | 94,28 ∨  | 37,86 ∨              |
| 600x300        | 115,08 ∨ | 41,39 ∨              |
| 800x300        | 149,76 ∨ | 50,21 ∨              |
| 1000x300       | 189,94 ∨ | 60,54 ∨              |
| 1200x300       | 219,07 ∨ | a.r. ∨               |
| 400x400        | 109,98 ∨ | 39,39 ∨              |
| 500x400        | 123,40 ∨ | 47,57 ∨              |
| 600x400        | 145,59 ∨ | 51,14 ∨              |
| 800x400        | 189,94 ∨ | 62,57 ∨              |
| 1000x400       | 237,08 ∨ | 74,25 ∨              |
| 1200x400       | 277,25 ∨ | a.r. ∨               |

### RAL 9016 price list

Item normally available from stock

| dimensions LxH | EGQIFB | SC regulation damper |
|----------------|--------|----------------------|
|                | euro   | euro                 |
| 400x75         | 54,24  | 17,21                |
| 500x75         | 62,02  | 20,54                |
| 600x75         | 69,85  | 23,50                |
| 800x75         | 85,86  | 29,54                |
| 1000x75        | 99,85  | 36,25                |
| 1200x75        | 118,14 | a.r.                 |
| 400x100        | 54,24  | 17,21                |
| 500x100        | 62,02  | 20,54                |
| 600x100        | 69,85  | 23,50                |
| 800x100        | 85,86  | 29,54                |
| 1000x100       | 99,85  | 36,25                |
| 1200x100       | 118,14 | a.r.                 |
| 400x125        | 58,76  | 19,86                |
| 500x125        | 67,43  | 23,00                |
| 600x125        | 76,09  | 26,21                |
| 800x125        | 93,80  | 33,57                |
| 1000x125       | 115,63 | 40,46                |
| 1200x125       | 138,08 | a.r.                 |
| 400x150        | 63,24  | 19,86                |
| 500x150        | 72,78  | 23,00                |
| 600x150        | 81,56  | 26,21                |
| 800x150        | 99,85  | 33,57                |
| 1000x150       | 131,40 | 40,46                |
| 1200x150       | 158,04 | a.r.                 |
| 400x200        | 80,56  | 24,57                |
| 500x200        | 88,16  | 28,86                |
| 600x200        | 99,85  | 33,25                |
| 800x200        | 123,12 | 40,75                |
| 1000x200       | 161,42 | 45,48                |
| 1200x200       | 196,36 | a.r.                 |
| 400x300        | 99,85  | 34,39                |
| 500x300        | 113,14 | 37,86                |
| 600x300        | 138,10 | 41,39                |
| 800x300        | 179,71 | 50,21                |
| 1000x300       | 227,93 | 60,54                |
| 1200x300       | 262,87 | a.r.                 |
| 400x400        | 131,98 | 39,39                |
| 500x400        | 148,08 | 47,57                |
| 600x400        | 174,71 | 51,14                |
| 800x400        | 227,93 | 62,57                |
| 1000x400       | 284,49 | 74,25                |
| 1200x400       | 332,69 | a.r.                 |

### Fixing kit

| Description | Euro |
|-------------|------|
| Fixing kit  | a.r. |