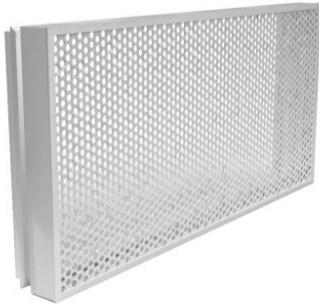


# EGFF Perforated grilles without frame



## Description

Air supply and exhaust grilles with perforated panel.

## Characteristics

Aluminium perimeter frame.  
Galvanised steel panel  
Finish: painted white RAL 9016  
Installation: fastening with brackets;

The perforated mesh is made according to the following specifications:  
-60° alternating round holes;  
-empty/full ratio 46%;  
-diameter of holes 5mm;  
-distance between centres 7mm.

## Use

For air exhaust in rooms.  
For flush installation for 12.5 mm thick plasterboard walls.  
For flush installation for masonry walls.  
For extraction and supply on fan coil cabinet.

## Accessories

SC galvanised steel regulation damper with blades with opposing movement.

## On request

Painting in different RAL colours;

## Effective cross-section

H	L					
	400	500	600	800	1000	1200
	Effective cross-section m <sup>2</sup>					
75	0,012	0,015	0,018	0,024	0,030	0,036
100	0,016	0,021	0,025	0,033	0,041	0,049
125	0,020	0,025	0,030	0,040	0,050	0,060
150	0,025	0,031	0,037	0,490	0,060	0,074
200	0,033	0,041	0,050	0,067	0,084	0,100
300	0,050	0,064	0,077	0,103	0,129	0,155
400	0,068	0,086	0,104	0,139	0,174	0,206

## Operating data

Vk: effective speed (m/s)  
m<sup>3</sup>/h: flow rate

L: width  
H: height  
All measurements are expressed in mm.

H	Vk m/s	L					
		400	500	600	800	1000	1200
		Flow rate m <sup>3</sup> /h					
75	2	86	108	130	173	216	259
	3	130	162	194	259	324	389
	4	173	216	259	346	432	518
100	2	118	148	177	236	295	354
	3	177	221	266	354	443	531
	4	236	295	354	472	590	708
125	2	144	180	216	288	360	432
	3	216	270	324	432	540	648
	4	288	360	432	576	720	864
150	2	177	221	266	354	443	531
	3	266	332	399	531	664	797
	4	354	443	531	708	886	1063
200	2	238	295	360	482	605	726
	3	356	443	540	724	907	1089
	4	475	590	720	965	1210	1452
300	2	360	461	554	742	929	1115
	3	540	691	832	1112	1393	1672
	4	720	922	1109	1483	1858	2229
400	2	490	619	749	1001	1253	1486
	3	734	929	1123	1501	1879	2229
	4	979	1238	1498	2002	2506	2972

## Noise level dB(A)

dB(A): noise level

sound power level	V m/s	dB(A)
	2	15/20
	3	22/28
	4	38/42

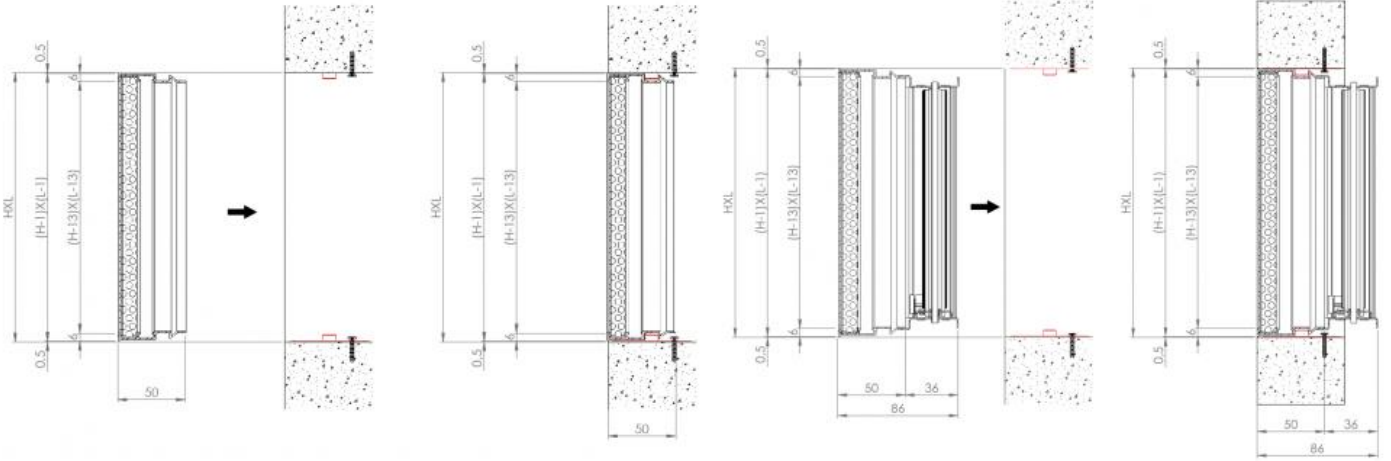
## Pressure drop (Pa)

Pa: pressure drops in Pascal

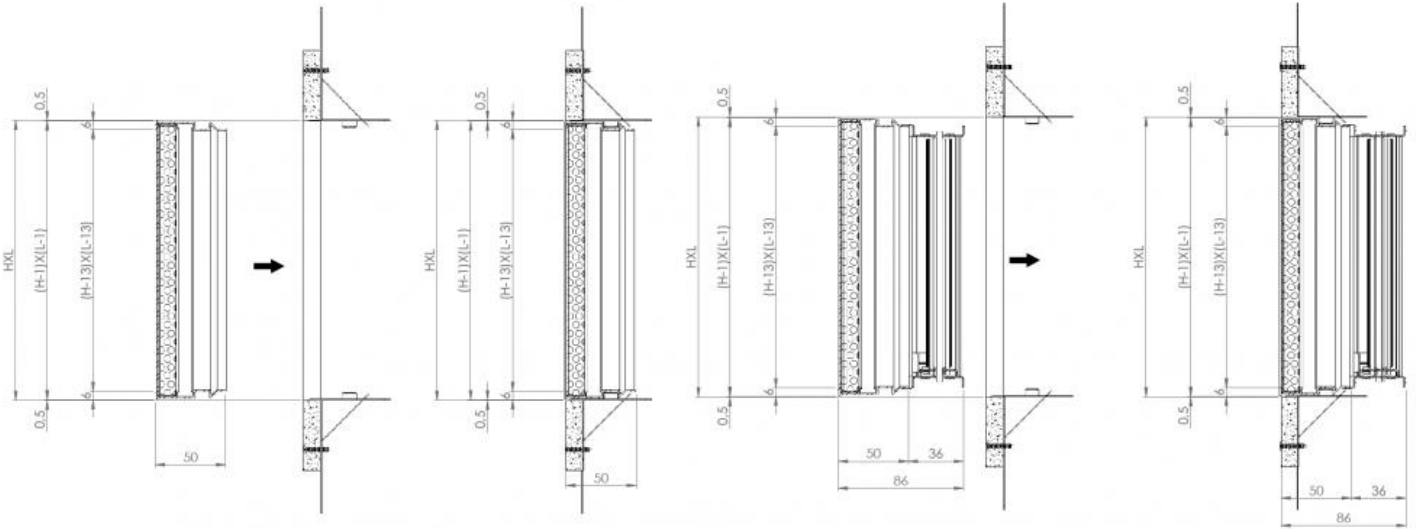
pressure drop	V m/s	Pa
	2	18
	3	40
	4	70

### EGFF dimensions with and without damper on masonry wall

For installation you need the fixing kit consisting of 4 brackets, not supplied with the article.  
N.B. for installation on a masonry wall, the heights 75 mm, 100 mm are not available.



### EGFF dimensions with and without damper on plasterboard wall



### SC regulation damper

Galvanised steel regulation damper with blades with opposing movement.



## Price list

Item normally available from stock		
dimensions LxH	EGFF	SC regulation damper
	euro	euro
400x75	45,98 v	17,21 v
500x75	51,47 v	20,54 v
600x75	57,00 v	23,50 v
800x75	66,78 v	29,54 v
1000x75	76,49 v	36,25 v
1200x75	91,78 v	a.r. v
400x100	45,98 v	17,21 v
500x100	51,47 v	20,54 v
600x100	68,39 v	23,50 v
800x100	66,78 v	29,54 v
1000x100	76,49 v	36,25 v
1200x100	91,78 v	a.r. v
400x125	48,91 v	19,86 v
500x125	51,47 v	23,00 v
600x125	57,00 v	26,21 v
800x125	66,78 v	33,57 v
1000x125	76,49 v	40,46 v
1200x125	91,78 v	a.r. v
400x150	55,17 v	19,86 v
500x150	61,76 v	23,00 v
600x150	68,39 v	26,21 v
800x150	90,14 v	33,57 v
1000x150	91,78 v	40,46 v
1200x150	110,15 v	a.r. v
400x200	73,56 v	24,57 v
500x200	82,34 v	28,86 v
600x200	91,19 v	33,25 v
800x200	106,86 v	40,75 v
1000x200	122,38 v	45,48 v
1200x200	146,86 v	a.r. v
400x300	86,52 v	34,39 v
500x300	97,20 v	37,86 v
600x300	107,60 v	41,39 v
800x300	126,90 v	50,21 v
1000x300	145,39 v	60,54 v
1200x300	185,60 v	a.r. v
400x400	99,49 v	39,39 v
500x400	112,95 v	47,57 v
600x400	125,64 v	51,14 v
800x400	147,96 v	62,57 v
1000x400	170,02 v	74,25 v
1200x400	204,02 v	a.r. v

## Fixing kit

For installation you need the fixing kit consisting of 4 brackets.

Description	Euro
Fixing kit	a.r. v