

# EVHRC 08 Highly efficient decentralized heat recovery unit for flow rates up to 80 m³/h

Product under development, will soon be available for purchase.



## Description

Decentralised double-flow ventilation unit with high efficiency heat recovery. The unit is particularly suitable for residential units with the possibility of installing as many units as necessary to cover the air exchange requirements of the home. Each unit covers approximately 50-60m² of surface area. Constant flow rate selectable in 3 levels.

## Characteristics

- Self-supporting sheet metal frame with polyethylene insulated internal structure. RAL9003 painted external shells.
- High efficiency counter-current cross-flow polypropylene heat exchanger. Low freezing temperatures. Very high heat exchange efficiency. Available in sensible or enthalpy operation.
- Forward-curved Brushless centrifugal fans with electronic motor and modulating control; very high efficiency and low noise levels.
- ePM1 80% filters with low pressure drop for both supply and exhaust, easily removable.
- Free cooling made with automatic management by means of temperature probes.

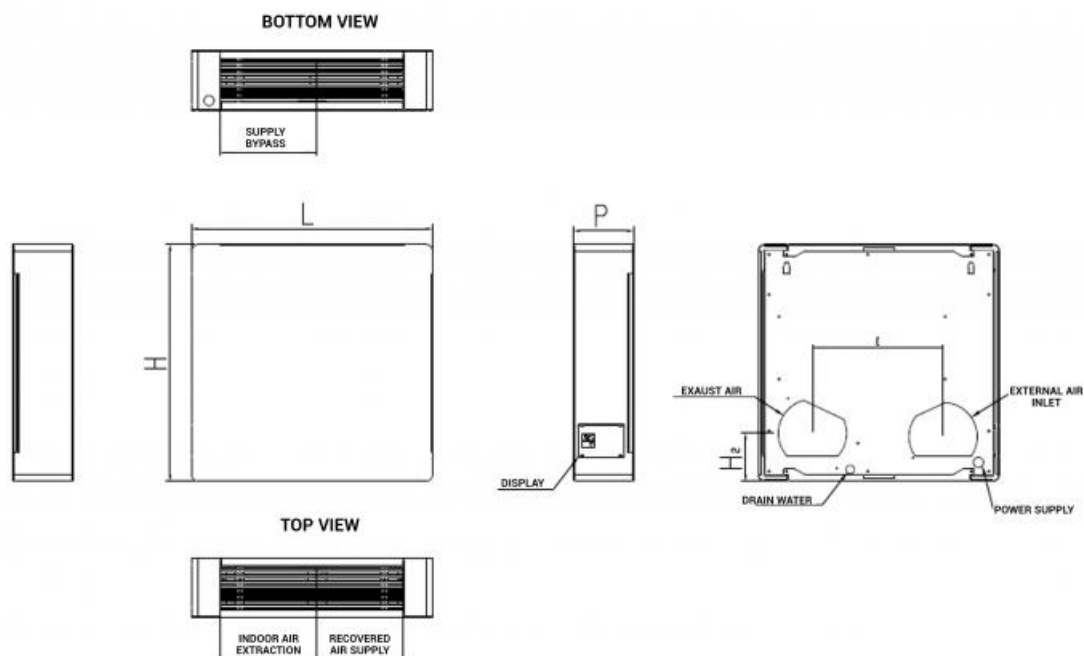
## INTEGRATED IN2 version control electronics

Electronic board for 3-step speed management, antifreeze function and automatic bypass. Wall-mounted remote touch panel on 503 box. Temperature sensors on board the machine. Humidity / air quality regulators built into the remote display. EVCNW2-B: advanced remote control with built-in humidity and VOC/CO₂ sensors and built-in Wi-Fi, white.

## Technical specifications

EVHRC size		08
Type of Fans		Forward-curved centrifugal - Brushless direct-coupled electronic motor - 0/10 V signal
Number of Fans	Nr.	2
Air flow rate	m³/h	80
Useful pressure	Pa	15
Heat exchanger (Data referring to the UNI EN 13141-7 Standard Indoor temp. 20° - Indoor humidity 28% - Outside temp. 7° - Outside humidity 72%)		
Type of heat exchanger		Counter-current plates - polypropylene
Number of Heat exchangers	Nr.	1
Heat recovery efficiency EN13141-7 sensible	%	90.2 (High efficiency counter-current)
Heat recovery efficiency EN13141-7 sensible / latent	%	80.5 / 61 (Counter-current with enthalpy membrane)
Filters		
Type of filters		Pleated filters
Filtration class		ePM1 80%
Acoustic data (Data referring to the UNI EN 3741 and UNI EN 3744 Standards)		
Sound power Lw transmitted by the structure	dB(A)	48
Sound pressure at 1 m	dB(A)	36,6
Sound pressure at 3 m	dB(A)	29,5
Electrical Data		
Power supply	V / ph / Hz	230 / 1 / 50
Power consumption	W	35
Protection rating	IP	X2

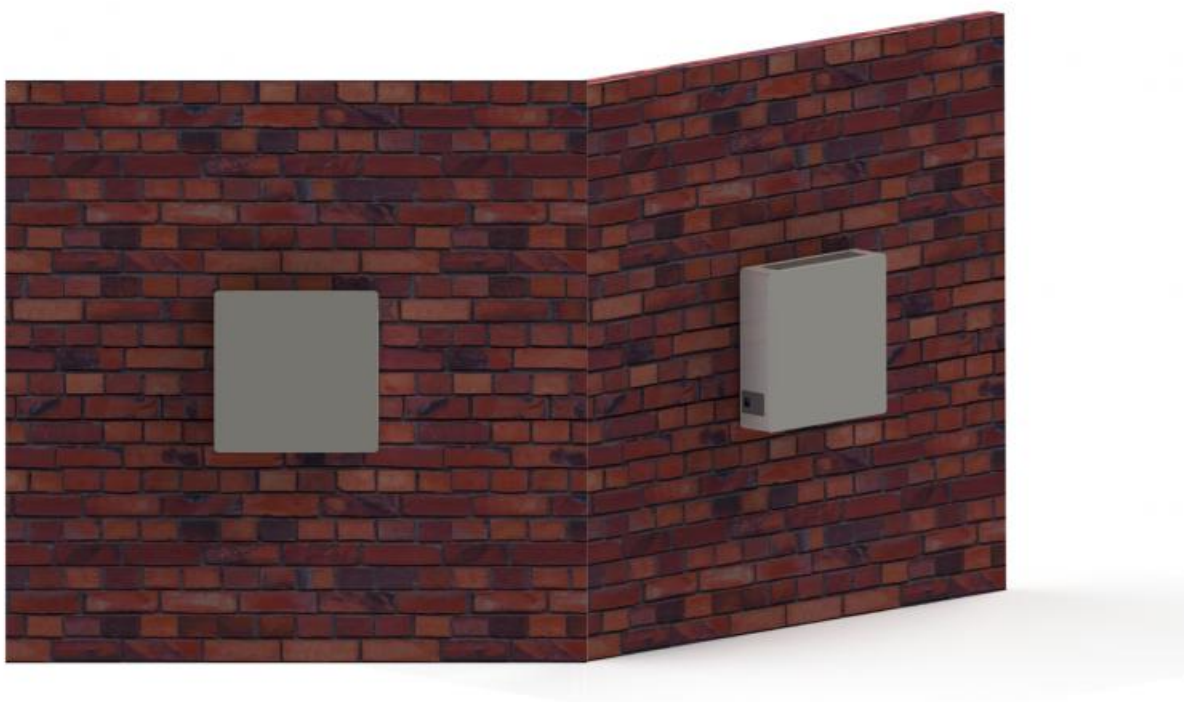
## Dimensions



Dimensions		EVHRC 08	
Width L	mm	565	
Depth P	mm	148	
Height H	mm	555	
External hole diameter	mm	2 x 160	
Hole centre distance l	mm	306	
distance H2	mm	112	
Condensate drain	mm	15	
Weight	Kg	Sensible	Entalpico
		20	21

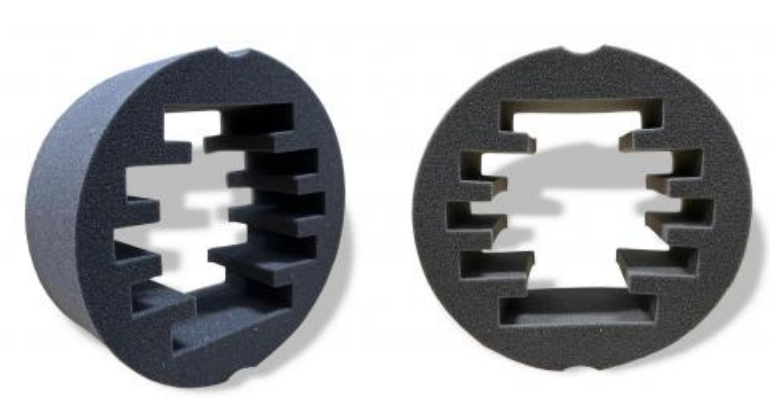
## Installation

The unit must be installed close to the wall with the ducts facing outwards.



Silencer kit (Accessory)

Silencers to be inserted into the inlet and outlet ducts for noise attenuation.



IN2 VERSION price list:

model	EVHRC 08	Silencer kit Ø 160 mm	pair of filters
	euro	euro	euro
EVHRC 08 ENTALPICO	2440,41 ∨	191,52 ∨	65,66 ∨



Scope of supply



**EVHRC 08  
Wall-mounted**

**EVHRC 08 fans to be installed behind  
the machine in the wall crossing**





**External wall grilles**