

# EPDS Differential air pressure



## Description

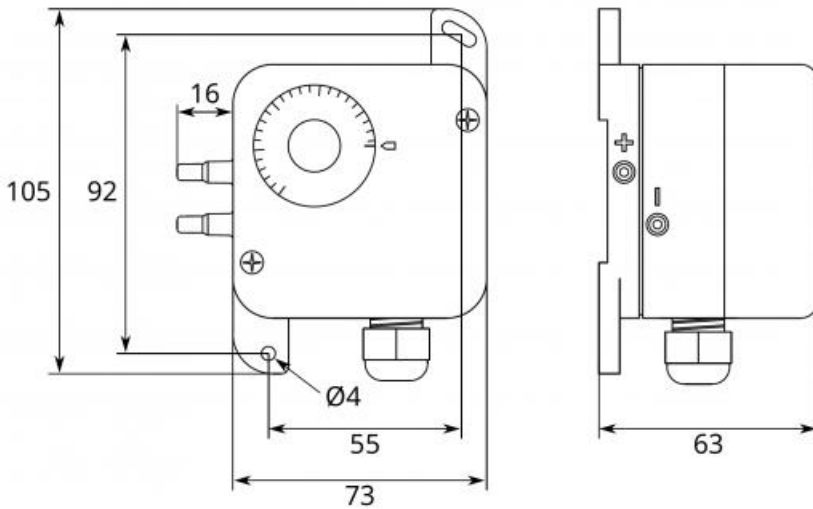
Differential air pressure switch for filters, fans, air ducts and air conditioning and ventilation systems.

## Use

Differential air pressure switch for the control and security in air conditioning systems for the signalling of :

- stop of the fans
- clogging of filters
- power interruption of electric batteries in the absence of air.

Installed in environments with air and non-aggressive and non-flammable gases.

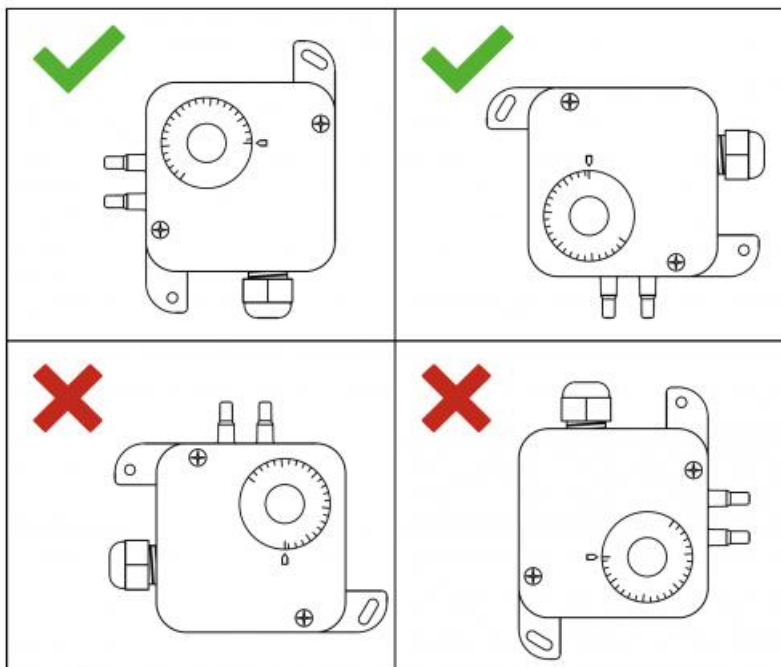


## Operating data

Pa : pressure drop in Pascal

Modello	EPDS-200	EPDS-300	EPDS-500	EPDS-600	EPDS-1500	EPDS-4500
Scala Pa	20-200	30-300	30-500	40-600	100-1500	500-4500
Accuratezza	±8 Pa al limite inferiore, ±15 % al limite superiore				±20 Pa al limite inferiore, ±15 % al limite superiore	±100 Pa al limite inferiore, ±15 % al limite superiore
Differenziale commutazione (Pa)	20	25	25	35	80	250
Attacchi pressione	Ø5 mm					
Contatti elettrici	NO/NC, contatto in scambio					
Caratteristiche elettriche	250 Vac, 0,1 A (res.)		250 Vac, 3 A (res.), 2 A (ind.)			
Cablaggio elettrico	M16 - 1,5mm <sup>2</sup>					
Temperatura di funzionamento (°C)	-20...+60					
Grado di protezione	IP54					

## Installation



### Price list

Tubetti e prese di pressione compresi nel pressostato.

Item normally available from stock	
Modello	Euro
EPDS-200	49,83 ✓
EPDS-300	49,83 ✓
EPDS-500	49,83 ✓
EPDS-600	49,83 ✓
EPDS-1500	49,83 ✓
EPDS-4500	49,83 ✓