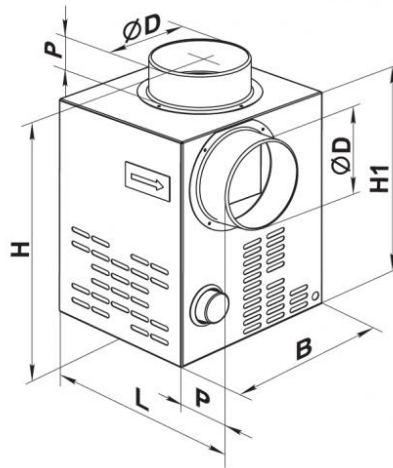


EVKAM Centrifugal fans for high temperatures



Description

Centrifugal fans with single-phase motor for high temperatures complete with adjustable thermostat.



Characteristics

Structure : galvanized steel.
 Colour: galvanized.
 Installation: in systems with temperatures of 150°C max.
 Protection rating:: IPX2

dimensions

all measurements are in mm

model	ØD	B	H	H1	L	P	Weight kg
EVKAM 125	124	245	350	300	260	50	5,82
EVKAM 150	149	285	350	300	300	50	6,9

Operating data and price list

dB (A) : noise index

Item normally available from stock

modello	giri	potenza assorbita		Massima temperatura flusso aria °C	dB(A) a 3 m	pressione statica Pa				euro
		W	A			0	50	100	150	
EVKAM 125	1300	108	0,81	150	42	400	320	150	-	339,47 ~
EVKAM 150	1280	115	0,84	150	42	520	475	425	325	378,15 ~

Working logic

When air temperature in the fireplace hood reaches the set point, the fan turns automatically on (fig. 1b) and distributes hot air from the fire hood place to other premises. It turns off, when the temperature falls down below the set point (fig. 1a).

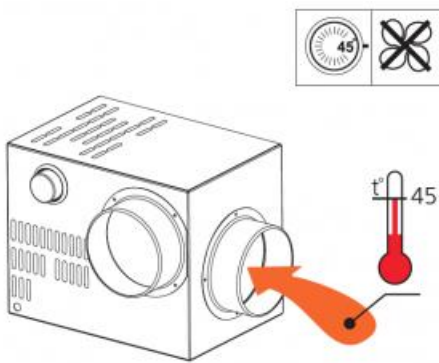


fig. 1a

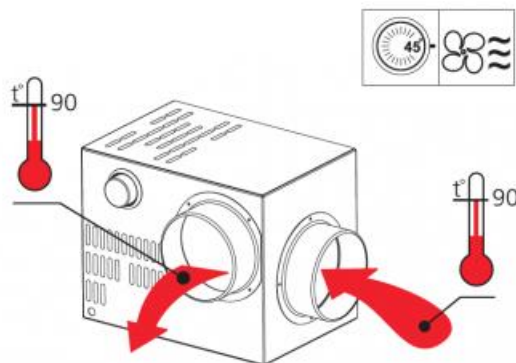


fig. 1b