

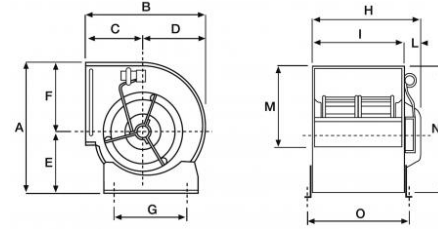


## Description

Double inlet centrifugal fans with directly coupled motor .  
Compliance regulations ERP 2015.

## Characteristics

Material : galvanized steel.  
Finish: galvanized.



## Use

Fan for clean air used in air handling units, extractors afonizzati and hoods .  
Air flow rates from 600 to 7700 m<sup>3</sup>/h .  
Pressures from 50 Pa to 400 Pa .  
230V single-phase motors with the exception of the 1100 versions of the T 12/9 and 12/12 models that are 400 V three-phase.

## Warnings

The air temperature must not exceed 40 ° C.  
Always check the absorptions of the electric motor; over-absorption causes overheating of the same, malfunctions and / or breakages.  
All engines are equipped with integrated thermal protection.

## Accessories

- Basic supports
- Pressing mouth flange
- Safety protection grids for suction mouths
- Electronic speed regulators.

## Operating data

Pa : pressure drop in Pascal  
dB (A) : noise index  
T : Three-phase  
3V: 3 speed motor

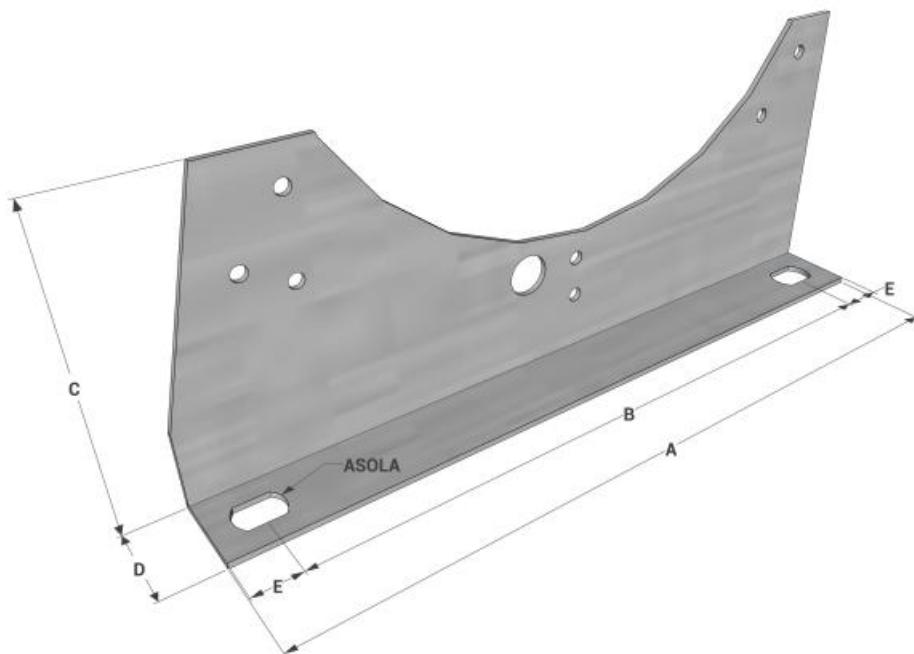
modello	W	Poli	dB (A)	IP	pressione Pa								
					50	100	150	200	250	300	350	400	
					portata m <sup>3</sup> /h								
7/7	50	6	60	IP30	1000	550							
	147	4	74	IP55	1600	1550	1500	1400	1100	400			
9/7	250 3V	6	65	IP20	1900	1650	1500						
	420	4	72	IP20	2300	2150	2050	1950	1900	1900	1900	1800	
9/9	250 3V	6	62	IP20	2400	2300	1800	200					
	420	4	72	IP30					2700	2500	2300	1300	
10/8	250	6	62	IP30	2500	2400	2100	1400					
	560	4	74	IP30					2900	2700	2600	2000	
10/10	250	6	65	IP20			2600	2400	500				
	560	4	70	IP30								2900	2800
12/9	745	6	68	IP20			4800	4300					
	1100T	6	72	IP30	6000	5700	5200	4800	4200	3300	400		
12/12	736 3V	6	68	IP30					4700	3700	400		
	1100T	6	72	IP30	6800	6400	5800	5200	4400	2000			

## dimensions

all measurements are in mm

modello	A	B	C	D	E	F	G	H	I	L	M	N	O
7/7	329	321	157	164	143	186	225	277	232	45	200	328	260
9/7	392	378	184	194	176	216	300	303	232	71	261	389	260
9/9	392	378	184	194	176	216	300	369	298	71	261	389	326
10/8	445	428	207	221	199	246	340	333	265	68	289	442	293
10/10	445	428	207	221	199	246	340	399	331	68	289	442	359
12/9	525	498	237	261	234	291	408	394	309	85	342	337	522
12/12	525	498	237	261	234	291	408	480	395	85	342	522	423

## Base supports dimensions



Model	A (mm)	B (mm)	C (mm)	D (mm)	E (mm)	ASOLA (mm)
EVDA 7/7	255	225	94	28	15	16x12
EVDA 9/7-9/9	330	300	94	28	15	16x12
EVDA 10/8- 10/10	370	340	130	28	15	16x12
EVDA 12/9-12/12	438	408	130	28	15	16x12

## Price list

Item normally available from stock								
modello	Velocità	Potenza Max ass.	Alimentazione	Codice motore	Regolatore di velocità		ventilatore EVDA	
		W					euro	
7/7	1	50	230V-1F-50Hz	713304-5	RCS300	104,40 ∨	373,26 ∨	
7/7	1	147		7133A15-5	RCS300	104,40 ∨	434,11 ∨	
9/7	3	250		713314-5	RCS600	129,60 ∨	636,97 ∨	
9/7	1	420		713316-5	RCS900	154,80 ∨	596,40 ∨	
9/9	3	250		713335-5	RCS600 (vel. max)	129,60 ∨	653,20 ∨	
9/9	1	420		713332-5	RCS900	154,80 ∨	576,11 ∨	
10/8	1	250		713354-5	RCS600	129,60 ∨	632,91 ∨	
10/8	1	550		713355C-5	RCS900	154,80 ∨	576,11 ∨	
10/10	1	250		713369-5	RCS600	129,60 ∨	641,03 ∨	
10/10	1	550		713373C-5	RCS900	154,80 ∨	584,23 ∨	
12/9	1	745		713390C-5	RCS210	226,80 ∨	908,80 ∨	
12/9	1	1100		400V-3F-50Hz	713394-5	-	-	973,71 ∨
12/12	3	736		230V-1F-50Hz	7133G01CD-5	RCS210 (vel. max)	226,80 ∨	989,94 ∨
12/12	1	1100		400V-3F-50Hz	713399-5	-	-	1010,23 ∨

Descrizione	Euro
Supporto base per EVDA 7/7	25,29 ∨
Supporto base per EVDA 9/7 9/9	31,71 ∨
Supporto base per EVDA 10/8 10/10	38,14 ∨
Supporto base per EVDA 12/9 12/12	44,57 ∨
Kit viti + gommini	12,43 ∨