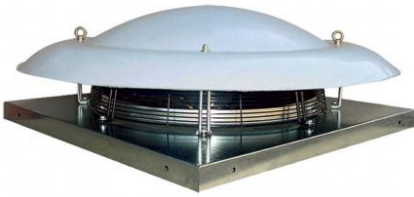


# EVTOP Helical roof jet fans



## Description:

Extractors helical roof for extracting large air volumes , with hat in polyester reinforced with fiber glass very resistant and aesthetically pleasing appearance .  
Le curve caratteristiche dei ventilatori sono state ottenute nei nostri laboratori mediante test aerulici secondo le norma AMCA 210 e ISO5801.

## Characteristics:

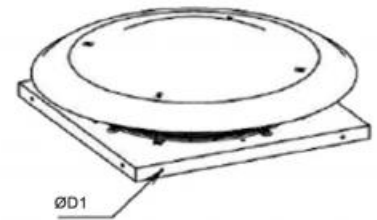
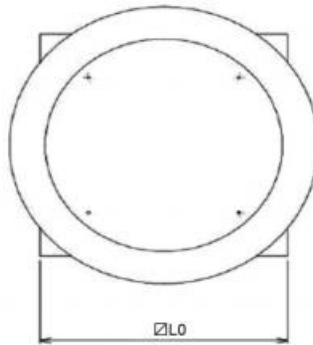
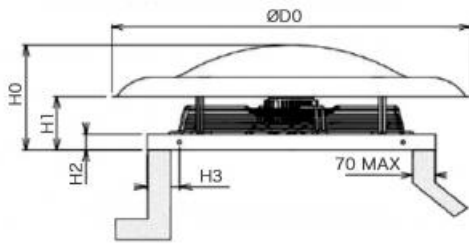
- Base conveyor and galvanized steel .
- Impeller with aluminium blades riveted on radial steel sealed.
- Three-phase motor with 2 speeds .
- Operating Temperature -15 to +60 ° C .

## Use:

Industrial halls, farms and wherever necessary to extract large volumes of air .

## Accessories :

Gravity shutter suction , complete network protection



## dimensions

all measurements are in mm

model	L0	H0	H1	H2	H3	ØD0	ØD1	Weight kg
400 4-4	660	300	138	45	100	700	12	17
500 4-4	760	345	160	50	100	900	12	25
630 4-4	890	362	185	55	100	1100	12	34
710 6-6	950	409	155	50	100	1300	12	47
800 6-6	1230	518	313	50	185	1300	12	62
1000 8-8	1400	600	335	50	170	1600	12	90

## Operating data

dB (A): sound pressure measured in free field at 6 meters

modello	kW	assorbimento		giri motore	dB(A)	portata aria m <sup>3</sup> /h			
		V	A			10 Pa	50 Pa	100 Pa	150 Pa
400	0,28	400	0,62	1300	48,4	4400	3900	2300	
	0,18	400	0,31	1060	46,7	3580	2390		
500	0,66	400	1,26	1290	55,5	7540	6890	5900	
	0,43	400	0,68	1000	52,9	5900	4850	3025	
630	1,75	400	3,7	1400	65,3	14700	14150	13350	12600
	1,35	400	2,3	1224	63,8	13350	12600	11700	10500
710	0,86	400	2,4	852	62,9	14000	12540	9610	
	0,45	400	0,9	650	61,1	10900	7930		
800	2,1	400	4,45	892	62,8	23600	22250	20400	17600
	1,41	400	2,34	718	61,8	19300	17370	13900	
1000	2,0	400	4,58	721	64,8	30330	28100	24910	
	1,74	400	3,24	606	63,9	27350	23790	17540	

## Price list

modello	euro
400 4-4	1169,89 v
500 4-4	1674,72 v
630 4-4	2110,09 v
710 6-6	2561,46 v
800 6-6	3223,89 v
1000 8-8	5237,77 v