

ESCI-C circular iris regulation dampers



Description

Circular iris regulation dampers for air flow regulation with differential pressure test connections to calculate the flow rate.

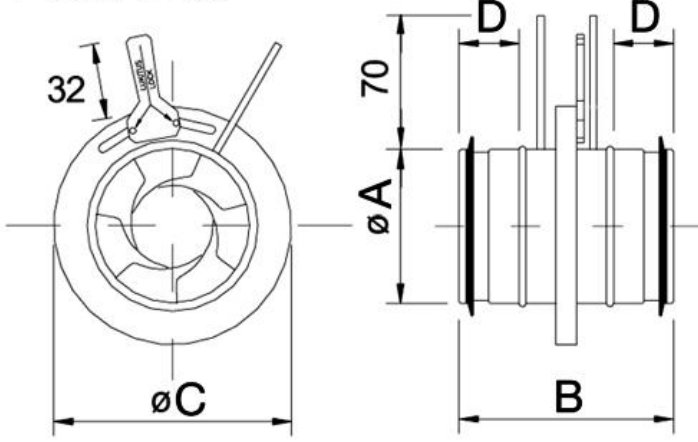
Characteristics

Material: galvanised steel structure and blades
 Regulation is obtained using a handle located on the damper, which changes the opening diameter of the damping hole.
 Tightness class C in accordance with the EN 1751 Standard.
 Operating temperature from -10 to +80°C.

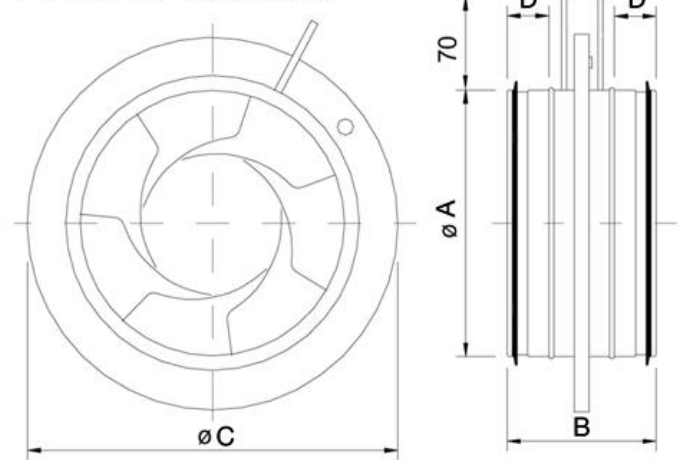
On request

Stainless steel version.

ESCI-C 80



ESCI-C 100-800



Dimensions

all dimensions are expressed in mm

| model ESCI-C | ØA | ØC | B | D | kg |
|--------------|-----|------|-----|-----|------|
| 80 | 79 | 125 | 115 | 35 | 0,5 |
| 100 | 99 | 165 | 115 | 30 | 0,6 |
| 125 | 124 | 188 | 115 | 30 | 0,7 |
| 150 | 149 | 230 | 115 | 30 | 1,0 |
| 160 | 159 | 230 | 115 | 30 | 1,0 |
| 200 | 199 | 285 | 120 | 30 | 1,4 |
| 250 | 249 | 335 | 135 | 40 | 2,0 |
| 300 | 299 | 405 | 140 | 40 | 2,6 |
| 315 | 314 | 405 | 140 | 40 | 2,6 |
| 400 | 399 | 525 | 150 | 55 | 6,5 |
| 500 | 499 | 655 | 150 | 52 | 9,0 |
| 630 | 629 | 815 | 160 | 60 | 16,0 |
| 800 | 799 | 1015 | 290 | 120 | 25,0 |

Flow rates and price list

* within the min-max range, accurate regulation is achieved without affecting the noise

| Item normally available from stock | | | | |
|------------------------------------|----------------------------|-----------------------|------|---|
| model ESCI-C | recommended air flow rates | | euro | |
| | min m ³ /h | max m ³ /h | | |
| 80 | 15 | 160 | | ✓ |
| 100 | 40 | 220 | | ✓ |
| 125 | 60 | 340 | | ✓ |
| 150 | 120 | 620 | | ✓ |
| 160 | 130 | 700 | | ✓ |
| 200 | 150 | 1100 | | ✓ |
| 250 | 400 | 2000 | | ✓ |
| 300 | 400 | 2500 | | ✓ |
| 315 | 500 | 2800 | | ✓ |
| 400 | 600 | 3500 | | ✓ |
| 500 | 600 | 3900 | | ✓ |
| 630 | 1600 | 7500 | | ✓ |
| 800 | 2500 | 11500 | | ✓ |