

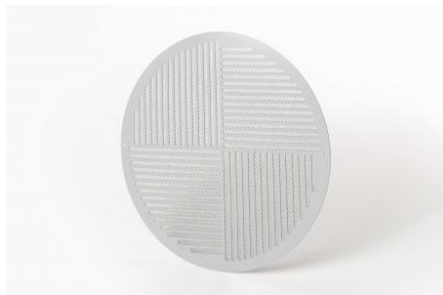
## EMVMPC-4 Circular 4-way grille

### Description:

four ways circular grill suitable for residential and industrial environments.

### Use:

Grille suitable for heating, air conditioning and air exchange applications. The grille design means that the air is distributed in 4 ways for better diffusion. The grille is made of galvanized steel.



Dimensions are expressed in mm

Item normally available  
from stock

model	external frame dimension	hole center distance	euro
EMVMPC-4-120	120	110	▼
EMVMPC-4-180	180	170	▼
EMVMPC-4-200	200	190	▼
EMVMPC-4-240	240	230	▼