

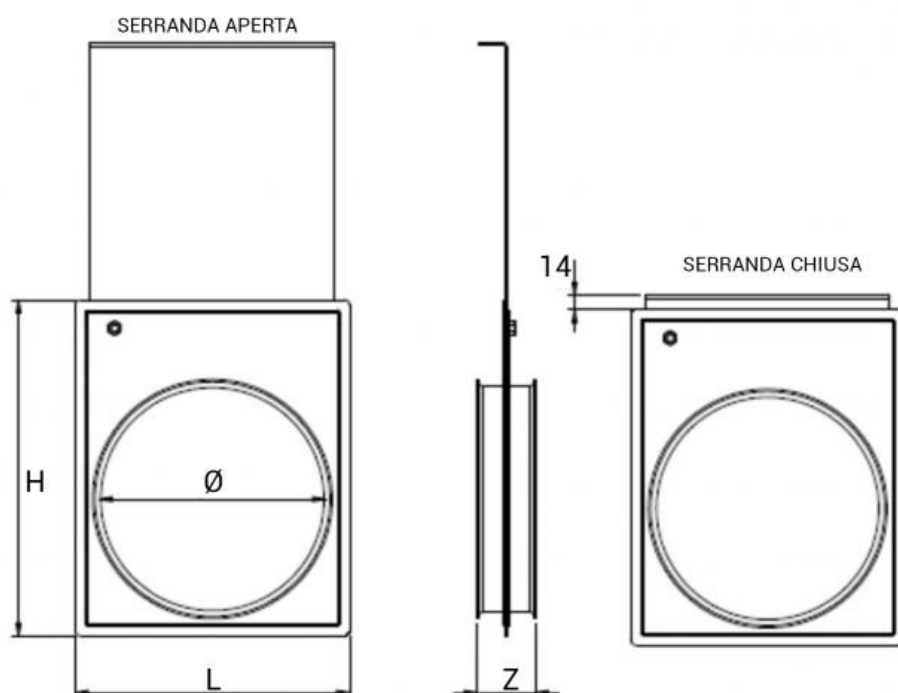
## SG serrande di regolazione a ghigliottina manuale a bordo cravatta

### Description

Serrande di regolazione a ghigliottina in acciaio zincato adatte per l'utilizzo in impianti di aspirazione.

### On demand

-Available on order in stainless steel dampers.  
-Pneumatic shutters.  
-Electro-pneumatic shutters.  
-Damper atex.

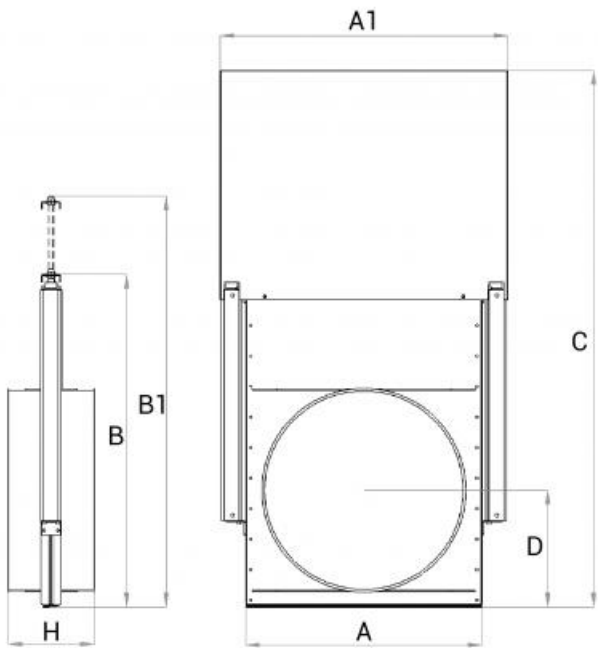


### Dimensions and price list

Dimensions are expressed in mm.

Item normally available from stock				
modello Ø	L	H	Z	serrande manuali SG
mm	mm	mm	mm	euro
80	120	150	40	✓
100	145	190	50	✓
120	165	210	50	✓
140	180	220	50	✓
150	190	237	50	✓
160	205	245	50	✓
180	220	280	50	✓
200	240	310	50	✓
220	260	330	65	✓
240	280	340	55	✓
250	290	362	65	✓
260	300	370	75	✓
280	320	390	65	✓
300	345	410	80	✓

### Dimensioni e Listino prezzi serie pesante



Dimensions are expressed in mm.

modello Ø	A	A1	B	B1	H	C	D	kg	serrande manuali SG
mm	mm	mm	mm	mm	mm	mm	mm		euro
350	470	600	790	1130	285	1160	240	30	✓
400	520	650	790	1180	285	1256	265	35	✓
450	570	700	890	1330	285	1406	290	40	✓
500	620	750	890	1380	285	1456	315	48	✓
550	670	814	990	1530	285	1606	340	58	✓
600	720	864	990	1580	285	1656	365	69	✓
650	776	914	1090	1730	285	1806	390	76	✓
700	826	964	1090	1780	285	1856	415	80	✓
750	876	1044	1190	1930	285	2006	440	86	✓
800	926	1094	1190	1980	285	2056	465	91	✓