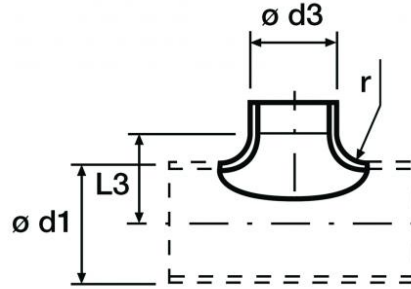


Description

Galvanized steel 90° moulded saddle connector.



Characteristics

Sheet thickness :
- diameters 80-250 mm $t = 0,7$ mm.

Spigot length :
- diameter 80 mm = 25 mm;
- diameters 100-250 mm = 40 mm;
- diameters 280-315 mm = 60 mm.

Dimensions and price list

Dimensions are expressed in mm.

Item normally available from stock									
model d1	d3	L3	r	saddle MS	model d1	d3	L3	r	saddle MS
				euro					euro
100	80	60	10	∨	300	150	170	20	∨
140	80	80	10	∨	315	150	175	20	∨
150	80	85	10	∨	180	160	110	20	∨
160	80	90	10	∨	200	160	120	20	∨
125	100	75	15	∨	250	160	145	20	∨
140	100	85	15	∨	280	160	160	20	∨
150	100	90	15	∨	300	160	170	20	∨
160	100	95	15	∨	315	160	175	20	∨
140	125	85	15	∨	250	180	150	25	∨
150	125	90	15	∨	280	180	165	25	∨
160	125	95	15	∨	300	180	175	25	∨
180	125	105	15	∨	315	180	180	25	∨
200	125	115	15	∨	250	200	150	25	∨
180	150	110	20	∨	280	200	165	25	∨
200	150	120	20	∨	300	200	175	25	∨
250	150	145	20	∨	315	200	180	25	∨
280	150	160	20	∨					