

ERPC Constant air flow regulators for circular duct



Description

Flow rate regulators for circular ducts on systems with constant flow rate. Automatic mechanical operation, without auxiliary energy to keep the air flow rate constant within a differential pressure range.

Use

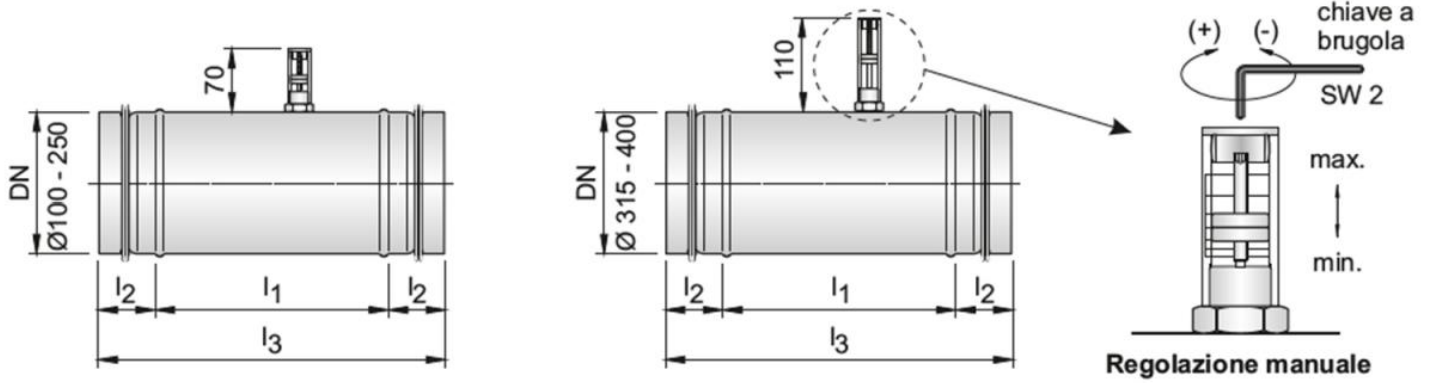
In all ventilation systems to keep the air flow rate constant, regardless of the pressure system used and of the pressure variations within the permissible range.

Characteristics

Material: galvanised steel.
Finish: galvanised.
Operating temperature: -20° +100°C.
Installation: on circular duct.

Notes

Air flow rate within a differential pressure range between 40 and 600 Pa (1000 for some models). The accuracy of the air flow is $\pm 5-10\%$, depending on the speed and conditions of use. The regulators can be calibrated on site directly in the finished system by means of the regulating device. Maintenance free.



Operating data and list prices

all dimensions are expressed in mm

Item normally available from stock

| diameter DN | Air flow rate (m ³ /h) | | Dimensions (mm) | | | euro |
|-------------|-----------------------------------|------|-----------------|----------------|----------------|------|
| | min | max | l ₁ | l ₂ | l ₃ | |
| 100 | 70 | 220 | 165 | 40 | 245 | ∨ |
| 125 | 100 | 280 | 165 | 40 | 245 | ∨ |
| 140 | 150 | 400 | 165 | 40 | 245 | ∨ |
| 160 | 180 | 500 | 235 | 40 | 315 | ∨ |
| 200 | 250 | 900 | 235 | 40 | 315 | ∨ |
| 250 | 500 | 1600 | 235 | 40 | 315 | ∨ |
| 315 | 800 | 2800 | 235 | 60 | 345 | ∨ |
| 400 | 1000 | 4000 | 295 | 60 | 415 | ∨ |