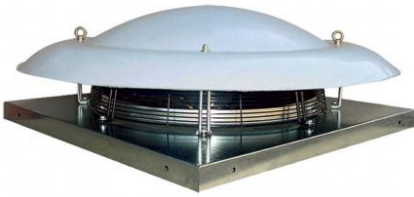


# EVTOP Helical roof jet fans



## Description:

Extractors helical roof for extracting large air volumes , with hat in polyester reinforced with fiber glass very resistant and aesthetically pleasing appearance .  
Le curve caratteristiche dei ventilatori sono state ottenute nei nostri laboratori mediante test aeraulici secondo le norma AMCA 210 e ISO5801.

## Characteristics:

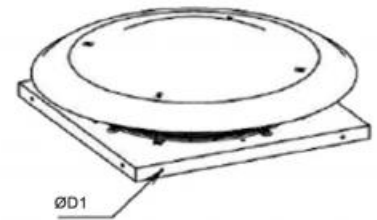
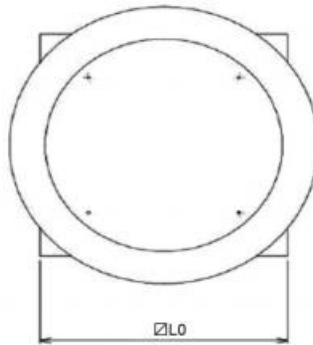
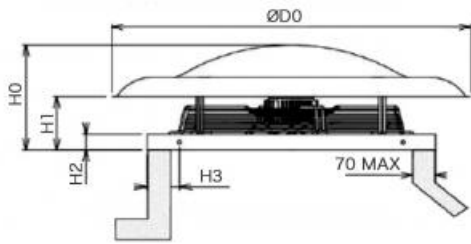
- Base conveyor and galvanized steel .
- Impeller with aluminium blades riveted on radial steel sealed.
- Three-phase motor with 2 speeds .
- Operating Temperature -15 to +60 ° C .

## Use:

Industrial halls, farms and wherever necessary to extract large volumes of air .

## Accessories :

Gravity shutter suction , complete network protection



## dimensions

all measurements are in mm

| model    | L0   | H0  | H1  | H2 | H3  | ØD0  | ØD1 | Weight kg |
|----------|------|-----|-----|----|-----|------|-----|-----------|
| 400 4-4  | 660  | 300 | 138 | 45 | 100 | 700  | 12  | 17        |
| 500 4-4  | 760  | 345 | 160 | 50 | 100 | 900  | 12  | 25        |
| 630 4-4  | 890  | 362 | 185 | 55 | 100 | 1100 | 12  | 34        |
| 710 6-6  | 950  | 409 | 155 | 50 | 100 | 1300 | 12  | 47        |
| 800 6-6  | 1230 | 518 | 313 | 50 | 185 | 1300 | 12  | 62        |
| 1000 8-8 | 1400 | 600 | 335 | 50 | 170 | 1600 | 12  | 90        |

## Operating data

dB (A): sound pressure measured in free field at 6 meters

| modello | kW   | assorbimento |      | giri motore | dB(A) | portata aria m <sup>3</sup> /h |       |        |        |
|---------|------|--------------|------|-------------|-------|--------------------------------|-------|--------|--------|
|         |      | V            | A    |             |       | 10 Pa                          | 50 Pa | 100 Pa | 150 Pa |
| 400     | 0,28 | 400          | 0,62 | 1300        | 48,4  | 4400                           | 3900  | 2300   |        |
|         | 0,18 | 400          | 0,31 | 1060        | 46,7  | 3580                           | 2390  |        |        |
| 500     | 0,66 | 400          | 1,26 | 1290        | 55,5  | 7540                           | 6890  | 5900   |        |
|         | 0,43 | 400          | 0,68 | 1000        | 52,9  | 5900                           | 4850  | 3025   |        |
| 630     | 1,75 | 400          | 3,7  | 1400        | 65,3  | 14700                          | 14150 | 13350  | 12600  |
|         | 1,35 | 400          | 2,3  | 1224        | 63,8  | 13350                          | 12600 | 11700  | 10500  |
| 710     | 0,86 | 400          | 2,4  | 852         | 62,9  | 14000                          | 12540 | 9610   |        |
|         | 0,45 | 400          | 0,9  | 650         | 61,1  | 10900                          | 7930  |        |        |
| 800     | 2,1  | 400          | 4,45 | 892         | 62,8  | 23600                          | 22250 | 20400  | 17600  |
|         | 1,41 | 400          | 2,34 | 718         | 61,8  | 19300                          | 17370 | 13900  |        |
| 1000    | 2,0  | 400          | 4,58 | 721         | 64,8  | 30330                          | 28100 | 24910  |        |
|         | 1,74 | 400          | 3,24 | 606         | 63,9  | 27350                          | 23790 | 17540  |        |

## Price list

| modello  | euro |
|----------|------|
| 400 4-4  | ∨    |
| 500 4-4  | ∨    |
| 630 4-4  | ∨    |
| 710 6-6  | ∨    |
| 800 6-6  | ∨    |
| 1000 8-8 | ∨    |