

EARS-PN Pipe connection passing through the ceiling

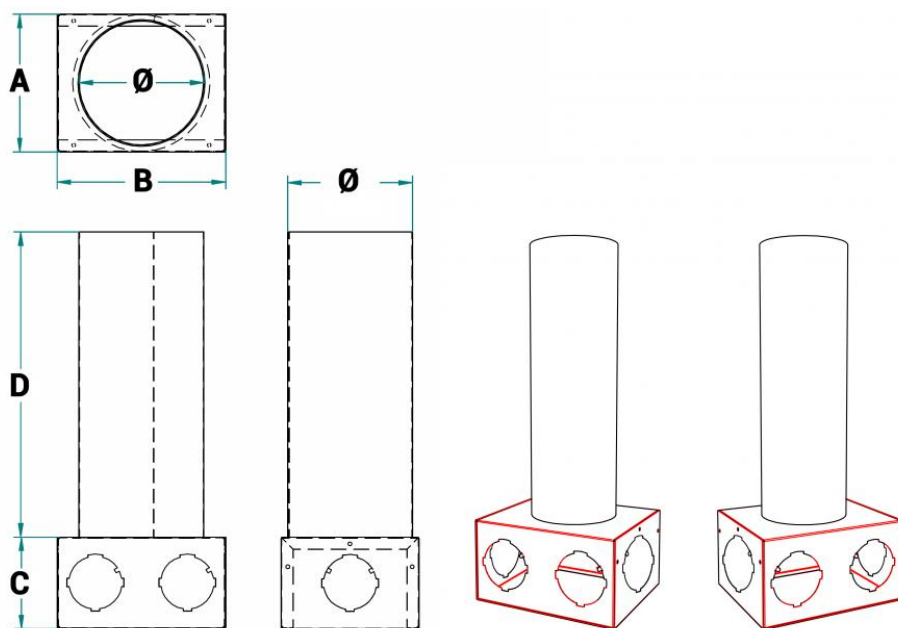


Description

Floor crossing connection with 2 plastic connections for HTPE PLUS 63 (internal \varnothing 63 mm and external 75 mm) or for HTPE PLUS 76 (internal \varnothing 76 mm and external 90 mm) and 2 pre-cut connections. Suitable for the installation of suction/delivery valves with connection diameters of 100 mm, 125 mm and 160 mm.

on demand

Stacchi per HTPE PLUS 76 (\varnothing 76 mm interno e 90 mm esterno).
Serranda di taratura su stacco.



Dimensions

All dimensions are expressed in mm.

Model	Nominal attack	\varnothing	A	B	C	D
EARS2-PN2	100	103	180	220	120	400
EARS4-PN4	125	128	180	220	120	400
EARS6-PN6	160	163	180	220	120	400

Price list

Item normally available from stock		
modello		euro
EARS2-PN2		▼
EARS4-PN4		▼
EARS6-PN6		▼

Accessories

Item normally available from stock		
Descrizione		Euro
Manicotto aggiuntivo per tubo diametro 63 mm interno in confezione da 5 pezzi		▼
Manicotto aggiuntivo per tubo diametro 76 mm interno in confezione da 5 pezzi		▼
Serranda di regolazione per attacchi diametro 63 mm o 75 mm interno in confezione da 5 pezzi		▼
Tappo per manicotto in confezione da 5 pezzi		▼

