

PLENUM BOX IN MOLDED POLYSTYRENE



Serie EPSP

Plenum box made of molded polystyrene with a density of 45 kg/mc, class 1 fireproof and internally crystallized. The transformation process combines the characteristics of the material making it compact and light.

FEATURE

These peculiarities, combined with its trapezoidal shape, allow it to be laid when the tiled false ceiling is completed, making easy both the construction and maintenance of the system.

The plenum box has an excellent thermo-acoustic insulation; therefore, it does not require the application of further insulating materials.

USE

Designed for use with diffusers made on panels with nominal dimensions 300x300, 400x400, 500x500 and 600x600. The plenum is supplied without the hose connection.

ACCESSORIES

- EQU-A equalizer for EPSP polystyrene plenum
- MCA flared sleeve Ø125-160-200-250 mm in ABS
- SER-A damper Ø 125-160-200-250 mm for MCA ABS sleeve.

INSTALLATION

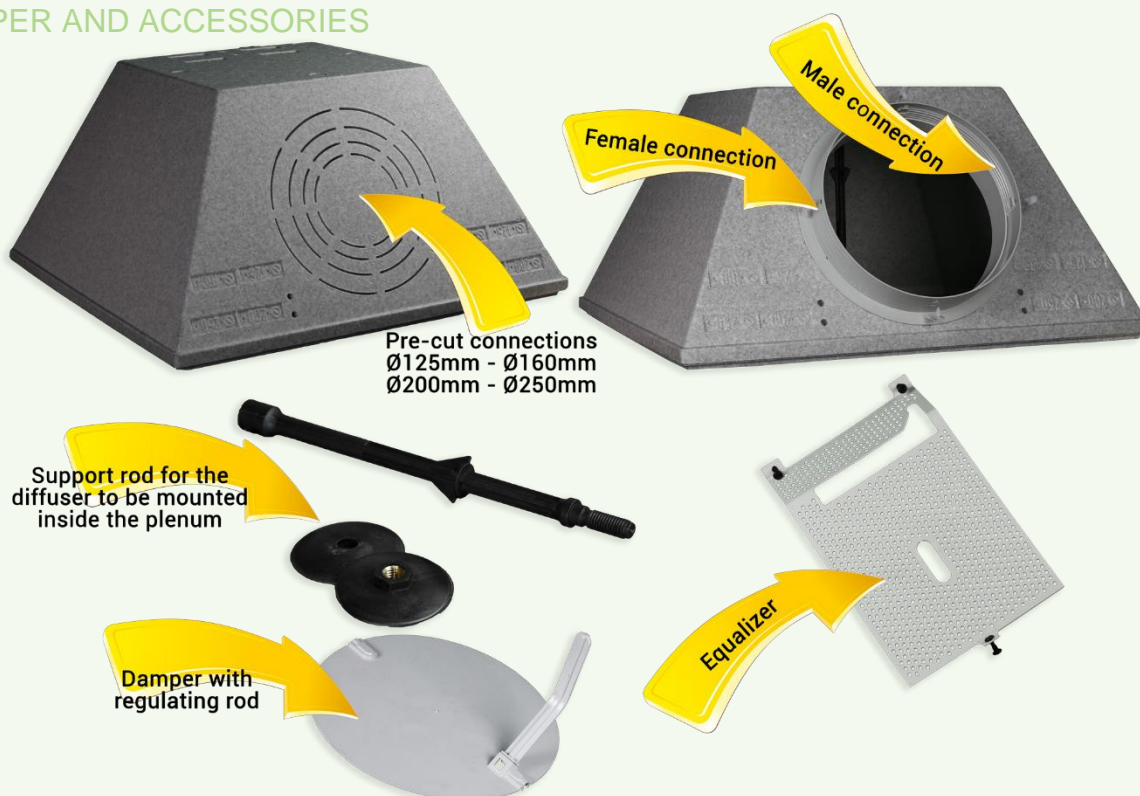
Thanks to its lightness, the plenum box is laid on the structure of the false ceiling, eliminating the need of suspensions for fixing it to the ceiling.

This gives a significative advantage of reducing assembly times and saving the space occupied by over 50% compared to a traditional plenum.

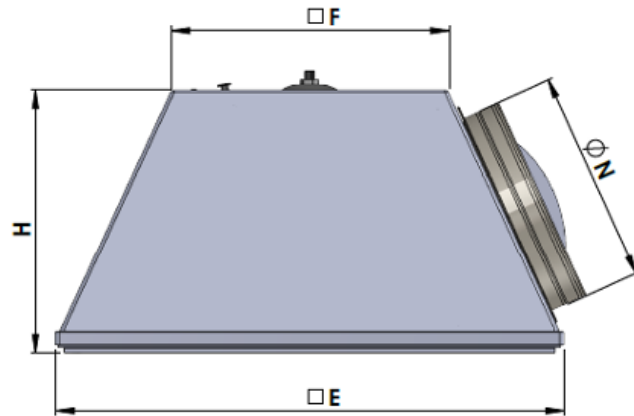
ON REQUEST

Damper on the fitting complete with control lever, for flow adjustment and equalizer.

DAMPER AND ACCESSORIES

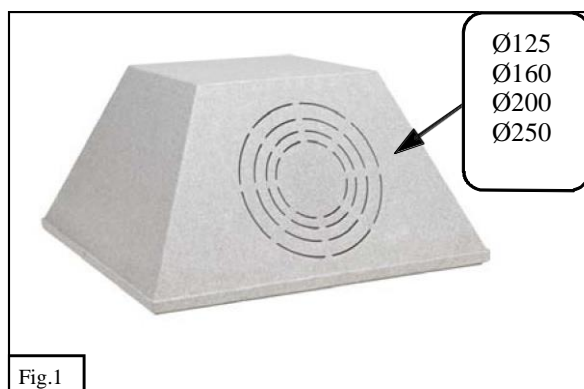


DIMENSIONS

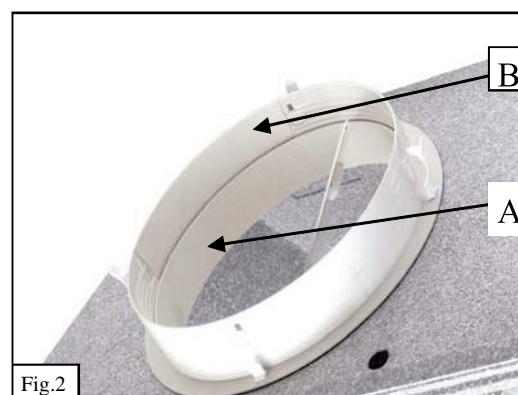


Model	Mountable connections ØN			Dimensions (mm).....		
	ØN1	ØN2	ØN3	E	F	H
EPSP 300x300	125	160	-	290	181	225
EPSP 400x400	125	160	200	390	239	255
EPSP 500x500	125	160	200	490	275	255
EPSP 600x600	160	200	250	590	320	311

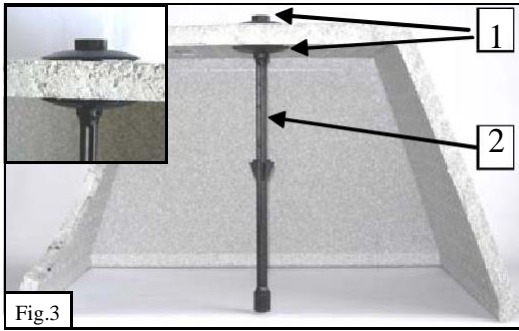
ASSEMBLY INSTRUCTIONS.



• Drill the hole for the sleeve, following the circumference indicated on the side of the plenum (fig.1), to the extent equal to the sleeve to be inserted (Ø250, Ø200, Ø160, Ø125).



• Insert the male sleeve A inside the hole made and screw the female sleeve B as in fig.2.

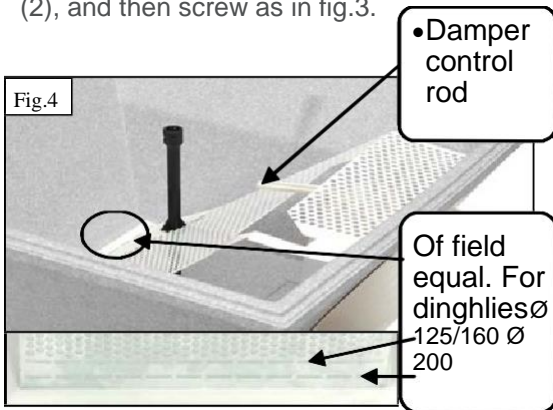


- Place the two washers (1), insert the rod (2), and then screw as in fig.3.



- Mount the shutter, taking care to position the control rod as in fig.4, hooking it to the pins on the sleeve.

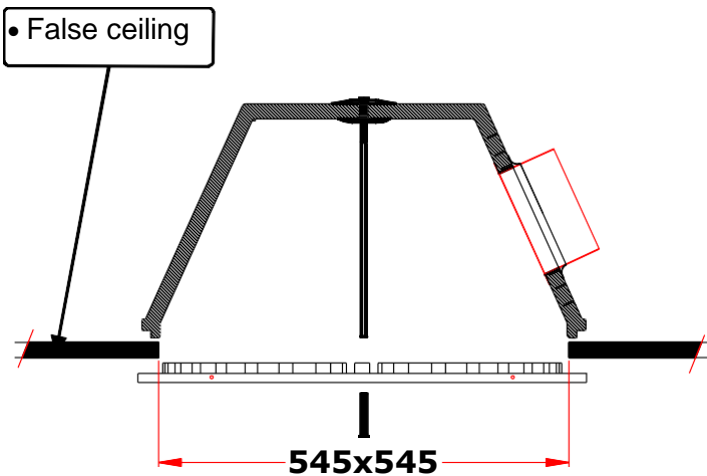
Position the equalizer.



(Note: for the Ø125, Ø160 and Ø200 sleeves is necessary to fold the equalizer along the trace indicated in fig.4. Mark the position of the equalizer fixing screws and drill the holes.

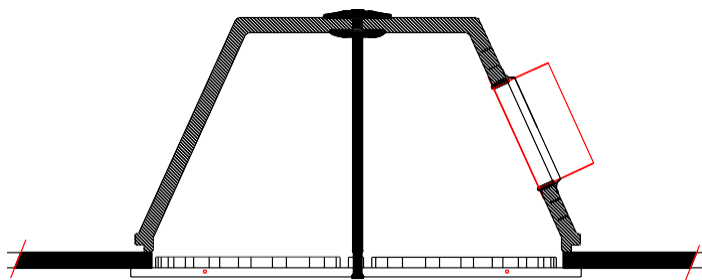
Fix the equalizer using the screws fixings supplied, taking care to position the damper control rod and the diffuser assembly rod in the appropriate slots as in fig.4.

EXAMPLE ASSEMBLY INSTRUCTIONS FOR PLASTERBOARD FALSE CEILING



Installation to the false ceiling:

Drill a square hole from 545 x 545 mm in paneling and position the plenum and the diffuser there as in the figure.



Diffuser installation:

Place the diffuser as in fig. and screw the screw to the rod, being careful to apply the right screwing force so as not to deform the diffuser, finally insert the screw cover cap.